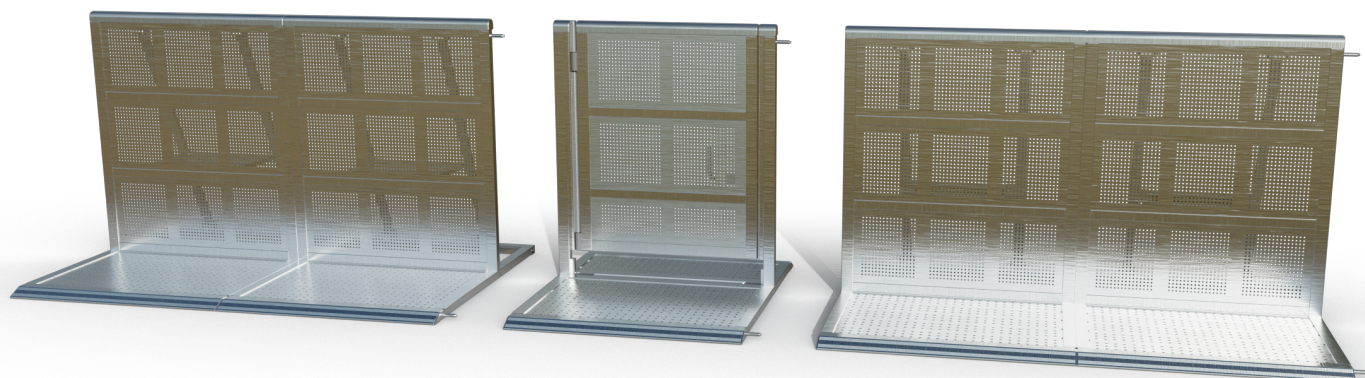


DB Gate 0m80

Dutch Barrier's Gate 0m80 is engineered for versatile access within barrier lines, where both entry and exit flexibility are required. Unlike the 0m75, the 0m80 opens in both directions, allowing for smooth, bi-directional flow. With its fully enclosed floorplate and sloped approach on both ends, the 0m80 integrates seamlessly with surrounding barriers for easy access.

- a state of the art aluminium barrier system, built for fast setup and optimised crowd control solutions -

About

Dutch Barrier's founders and partners boast over 50 years of experience in high-end manufacturing, layout design, and crowd control solutions. We saw an opportunity to start afresh with an entirely new stage barrier design, preserving the best features and improving upon them where possible.

Why

We believe in quality, safety, and creating an unforgettable experience. The safer an audience is, the more comfortable it will feel at your event.

How

We achieve quality and safety by leveraging 50-plus years of combined original creators' experience to reinvent the to date world's best barrier system from the ground up, making it accessible to anyone who might be in the market for such a system, either to rent or to buy.

What

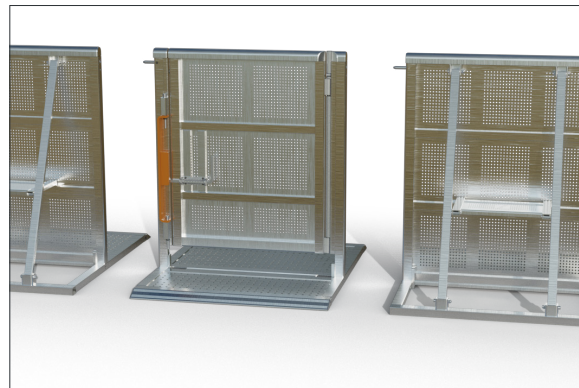
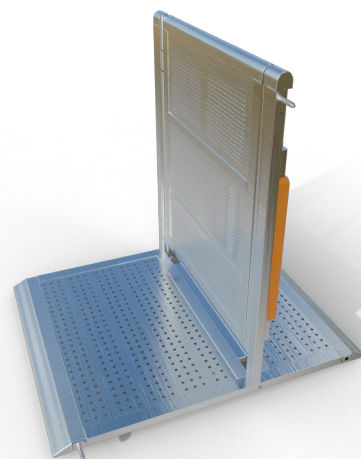
Dutch Barrier® is a state-of-the-art lightweight aluminium barrier system offering an innovative combination of straights, special sections and storage solutions. Create ingenious crowd control solutions, enjoy quick setups and enhanced handling, and benefit from an equal footprint for every dolly during transport or storage.

Oh, and there's one more thing...

Dutch Barrier® is not just a brand. It's a state-of-the-art engineering company where customer support is an integral part of the mission rather than being hidden behind the impersonality of an online promise.

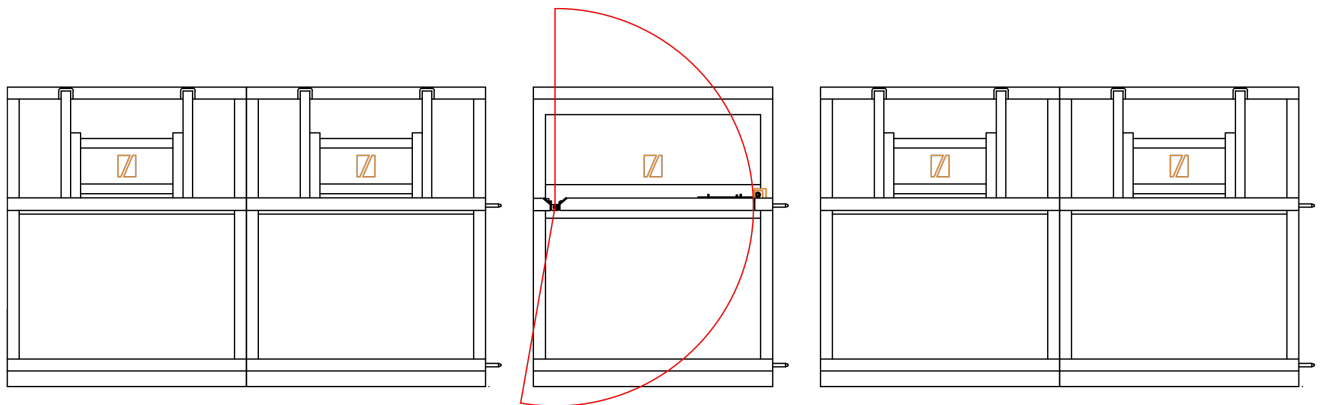
More information: info@dutchbarrier.nl

Rental & Sales: info@duchtbarrier.services



- a safe show for every row -

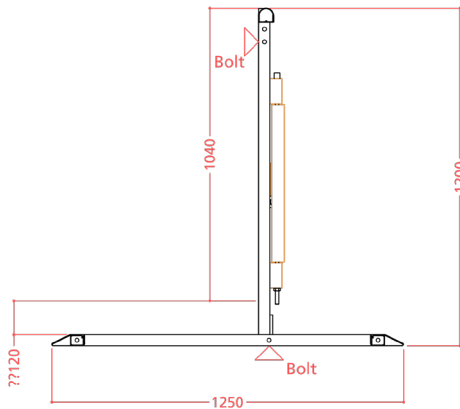
DB Gate 0m80



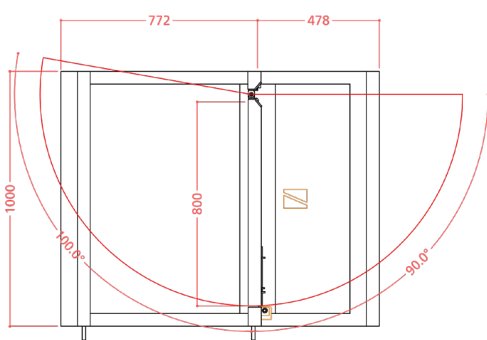
top view

Dutch Barrier's Gate 0m80 is designed for stability and trip-free access in low-pressure areas. It features a latch-based locking mechanism that allows for rapid evacuation if needed, enhancing its suitability as an emergency exit. Its fully closed, sloped floorplate prevents tripping hazards while maintaining secure operation during event activities.

- a state of the art aluminium barrier system, built for fast setup and optimised crowd control solutions -



side view



top view

Technical Specs

- A full aluminium treadplate, sloped in front and back, and aluminium upright with four heavy-duty hinges in between two straight half sections
- A treadplate measures 1000mm wide and 1250mm deep, the upright measures 990mm wide and 1040mm high
- A rounded top rail and welded end caps for the audience's comfort & safety
- Bottom pin provides for easy setup and alignment
- The treadplate interconnects at the bottom on either side by one standard Dutch Barrier bolt
- Also available with black upright
- Weights: Floor 22.8kg, upright 27,2kg
- Stored and travel per 4 complete sets in a bespoke stainless steel dolly
- Use in high crowd pressure areas: ●●●● 5/5 (3/5 recommendation)

- a safe show for every row -