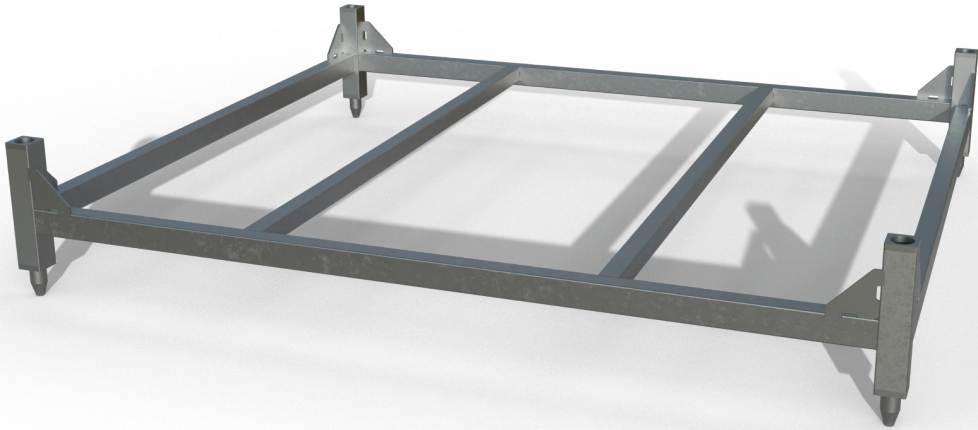


DB Stacking Ring



Dutch Barrier's Stacking Ring enables safe dolly stacking while maintaining the lowest dolly height in the industry. By improving working posture, reducing lifting height, and eliminating overhead lifting, it sets a new standard in ergonomics and crew health and safety, contributing to long-term wellbeing and greater efficiency on site.

- a state of the art aluminium barrier system, built for fast setup and optimised crowd control solutions -

Dutch Barrier's founders and partners saw an opportunity to start afresh with an entirely new stage barrier design, preserving the best and improving the rest.

Why. We believe in quality, safety, and creating an unforgettable experience.

How. By leveraging the original creator's combined experience to reinvent the best barrier system to date from the ground up.

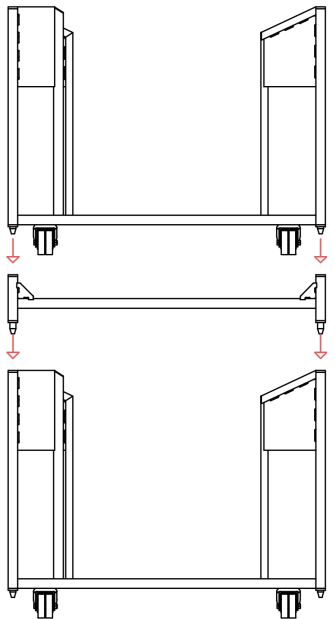
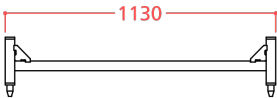
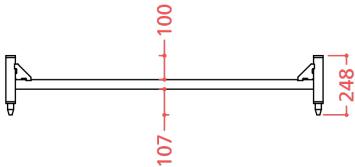
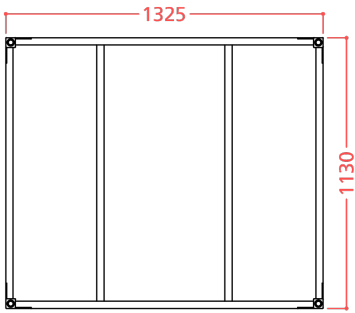
What. Dutch Barrier® is a high-end, lightweight aluminium barrier system offering an innovative combination of straights, special sections, and storage solutions, available to rent or buy.

Oh, and there's one more thing...
We are a state-of-the-art engineering company where customer support is an integral part of the mission instead of an online promise.

More information: info@dutchbarrier.nl
Rental & Sales: info@duchtbarrier.services

Technical Specs

- Identical footprint ensures seamless stacking and full mix-and-match transport compatibility across all Dutch Barrier dollies
- Identical footprint for seamless mix-and-match stacking and transport compatibility
- Weight 16.4kg



- a safe show for every row -