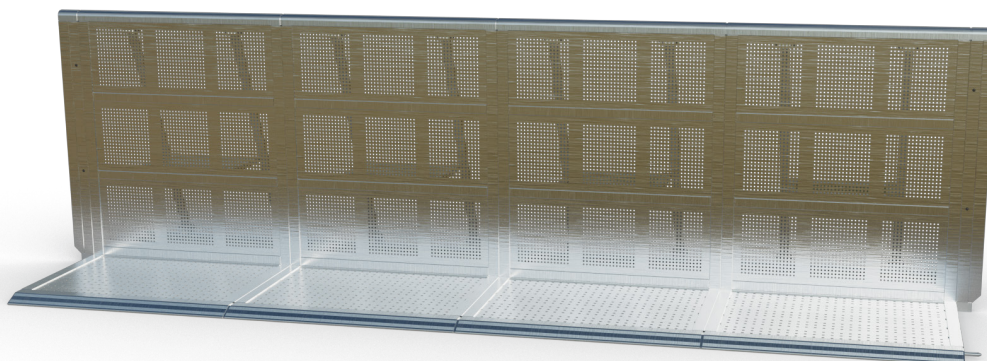


DB End Cap - Left & Right



Dutch Barrier's End Cap – Left & Right is designed as a finishing accessory for barrier lines, providing a clean and safe termination point. Its primary function is to securely cover the protruding pin at the end of a barrier line, ensuring a smooth edge. Like the DB Side Slope eliminates trip hazards, the End Cap contributes to overall safety and visual consistency in event setups.

- a state of the art aluminium barrier system, built for fast setup and optimised crowd control solutions -

About

Dutch Barrier's founders and partners boast over 50 years of experience in high-end manufacturing, layout design, and crowd control solutions. We saw an opportunity to start afresh with an entirely new stage barrier design, preserving the best features and improving upon them where possible.

Why

We believe in quality, safety, and creating an unforgettable experience. The safer an audience is, the more comfortable it will feel at your event.

How

We achieve quality and safety by leveraging 50-plus years of combined original creators' experience to reinvent the to date world's best barrier system from the ground up, making it accessible to anyone who might be in the market for such a system, either to rent or to buy.

What

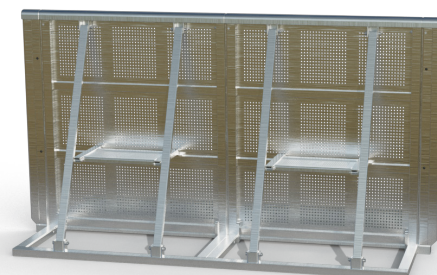
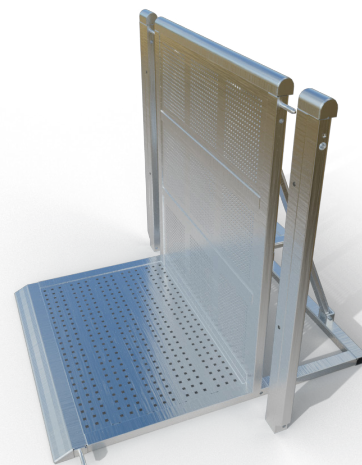
Dutch Barrier® is a state-of-the-art lightweight aluminium barrier system offering an innovative combination of straights, special sections and storage solutions. Create ingenious crowd control solutions, enjoy quick setups and enhanced handling, and benefit from an equal footprint for every dolly during transport or storage.

Oh, and there's one more thing...

Dutch Barrier® is not just a brand. It's a state-of-the-art engineering company where customer support is an integral part of the mission rather than being hidden behind the impersonality of an online promise.

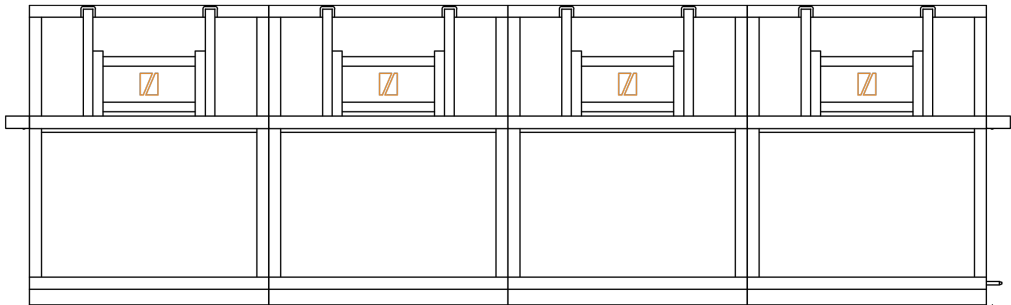
More information: info@dutchbarrier.nl

Rental & Sales: info@dutchbarrier.services



- a safe show for every row -

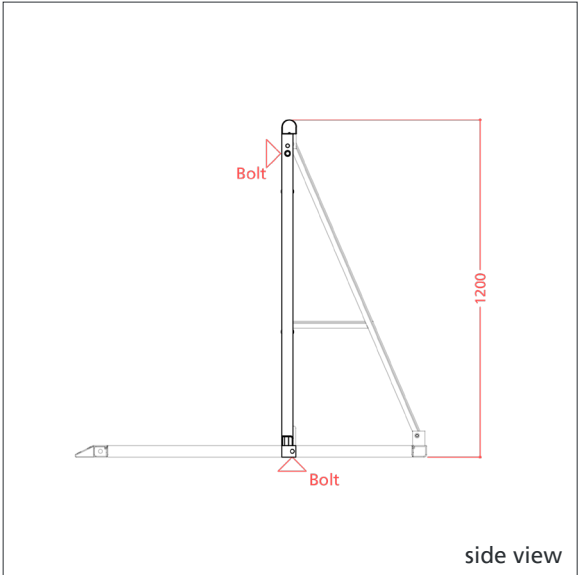
DB End Cap - Left & Right



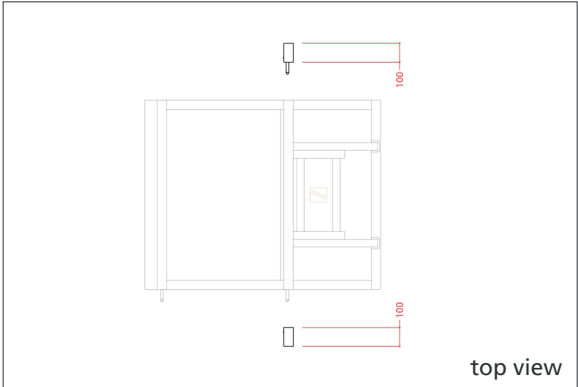
top view

In addition to serving as a protective end piece, Dutch Barrier's End Cap – Left & Right allows seamless integration with external fencing systems. A tube extension can be bolted to the End Cap, providing a solid anchor point for temporary fencing with standard fence clamps, allowing for versatile perimeter setup.

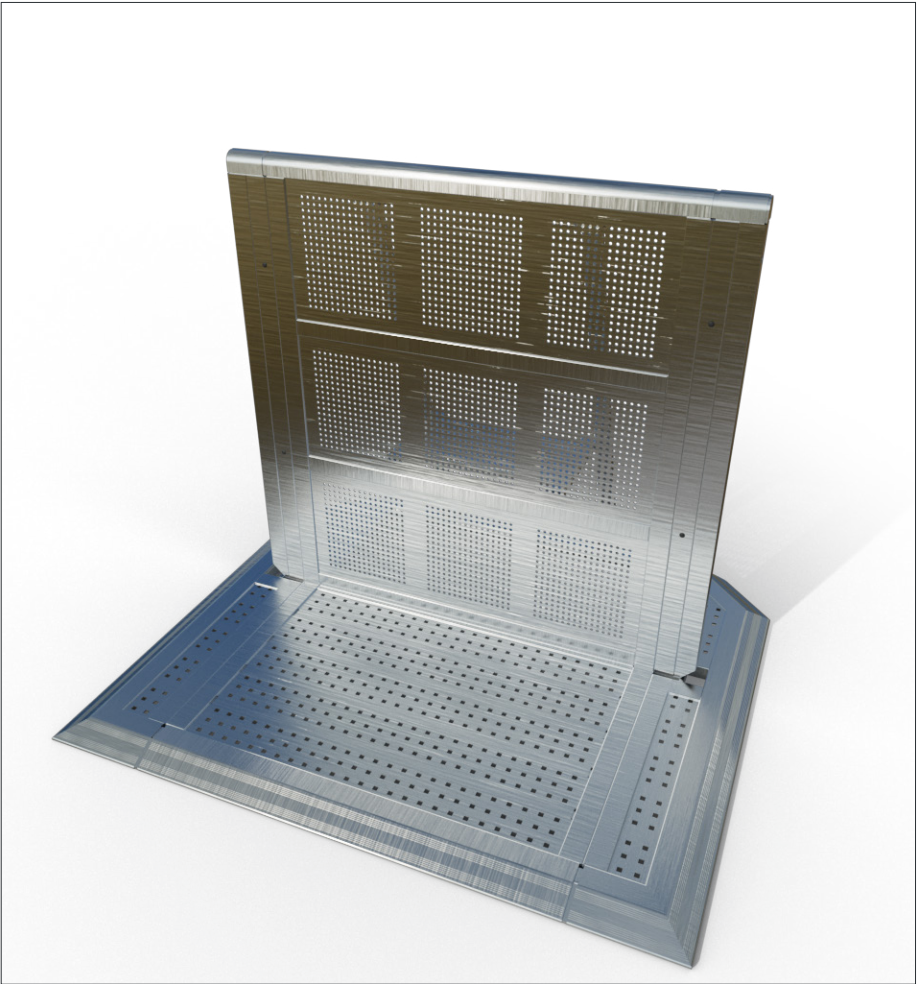
- a state of the art aluminium barrier system, built for fast setup and optimised crowd control solutions -



side view



top view



- a safe show for every row -